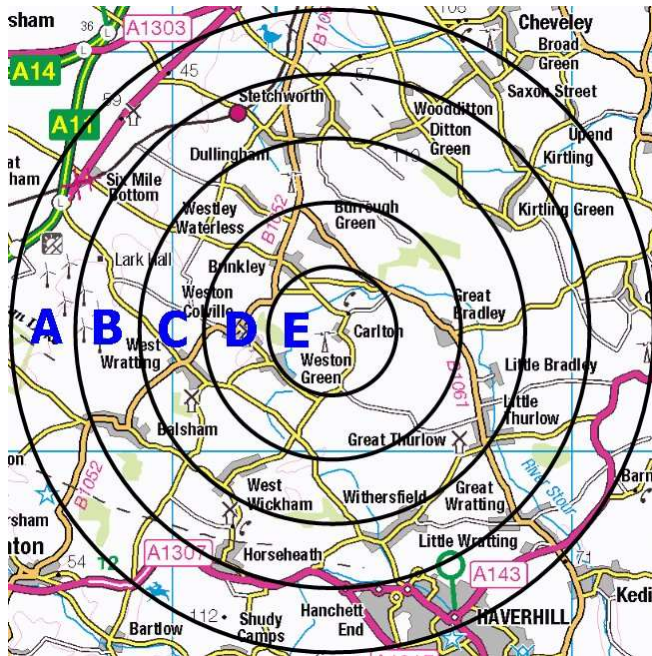


Bullseye Navigational Scatter Format

Your objective will be to find 5-letter code words hidden in a five-mile radius of map reference TL 64000 53000 (near the village of Carlton).



Code Words

If you draw circles of 1, 2, 3, 4 and 5 miles radius from this point on map 154 they will look like this (large scale). The rings have been assigned letters: A is the outer ring to E as the innermost ring. Very, very roughly there will be 16 possible locations to visit in ring A; 8 in ring B; 4 in C; 2 in D; and 2 in E – a total of 32. In line with Scatter rules, you will only have to visit 75% of these i.e. 24 locations to get a maximum score.

You don't have to draw the circles on your map, it's just a guide to the approximate layout of the codewords.

The 16 locations in ring A are designated A1, A2 ... A16. They will be spread (roughly) evenly around the ring. Hidden at each location there will be a tag containing **two anagrammed** words. The locations will be paired. The anagrams at A1 and A2 will be different but unscrambled will yield identical words. The same will

apply to A3/A4 ... A15/A16. For example, at A1 there could be codewords BOWNR/HITWE and WORN/B/WITHE at A2. Both resolve to the words BROWN/WHITE.

You'll need to enter the codewords on your Score Card to score points.

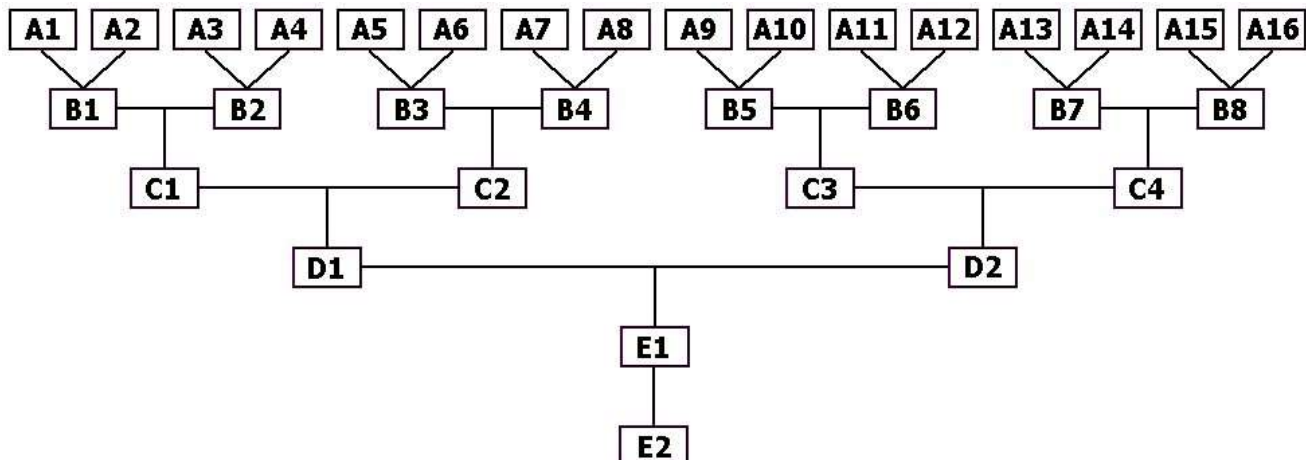
In ring B the locations are designated B1, B2 ... B8. When you have found the pair A1 **or** A2, you will have the information for you to find the location of B1. A3 **or** A4 will lead you to B2 and so on to A15 **or** A16 giving B8. At "B" (and "C" and "D") locations there will be **single unanagrammed** code words.

The pattern continues for ring C with 4 locations. Pair B1 **and** B2 will lead you C1 ... pair B7 **and** B8 will lead you to C4.

And for ring D: pair C1 **and** C2 will lead you to D1 and C3 **and** C4 to D2.

For ring E: D1 **and** D2 will lead you to E1. At E1 there will be **two unanagrammed** code words which will lead you to bonus word E2. The word at E2 should be removed and brought to the finish to claim the bonus points.

The diagram below shows how the locations link together.



You will record each code word that you find on a score card. Every "A" word will score 1 point; "B" words – 2 points; "C" words – 4 points; "D" words – 8 points; E1 – 16 points and E2 – 20 points. The maximum score you can achieve will be 100 points if you visit half of the "A" locations and all of "B", "C", "D", and "E" ($8 \times 2 \times 1 + 8 \times 2 + 4 \times 4 + 2 \times 8 + 16 + 20$). If you exceed 100 points, by recording more than "A"s than necessary, your score will be capped at 100.

Strategy

Obviously, you need to visit one of each pair of "A" locations in order to reach "B", "C", "D" and "E". However, if you can't find some of the code words your search in the next inner ring will be compromised. For example, if you can't find A1 or A2, you won't have location information to get you to B1, C1, D1, E1 and E2. If that happens, you'll have to supplement your score with some extra "A" locations.

Finding Locations

At signing-on you will receive an Answer Card (see example here) and a Location Table (see example here).

At the start time you will receive cryptic clues to the location of points A1 to A16.

Suppose the clues for A1 were: 1) *Concentrate on a Ford model* and 2) *Severe burial place*. The 5-letter word answers are: 1) *FOCUS* and 2) *GRAVE*. Look up these words in the example Location Table. You'll find FOCUS in column 1 with a Description: **Behind white pillar (934/662)** and GRAVE in column 2 with a Grid Square: **7054**. This means in grid square 7054, or more precisely **at map reference 70934 54662, behind a white pillar** you will find the two anagrammed words for A1.

Another example. A9: 1) *Approximately a boxing contest* and 2) *Courageous North American Indian*. The 5-letter answers are 1) *ABOUT* and 2) *BRAVE*. From the example Location Table you'll find ABOUT in column 1 with a Description: **30mph road sign (764/473)** and BRAVE in column 2 with a Grid Square: **6852**. So, you'll find the two anagrammed words for A9 at a **30mph road sign at map reference 68764 52473**.

Say the two anagrammed words at A1 were: WALCR and CRIBK, which unscrambled give CRAWL and BRICK. These two words give the location of B1 (see above - A1 or A2 point to B1). Again, look these words up in the example Location Table. So B1 is **Left of post box at map reference 70824 50389**. At B1 there will be a single unanagrammed word. Combine it with the word at B2 to give the descriptive location for C1.

Follow the same method through B, C and D. There will be two words at E1 which will point you to E2.